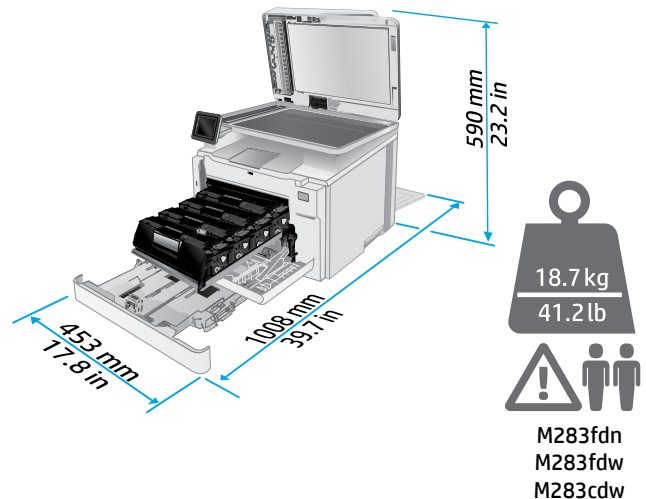
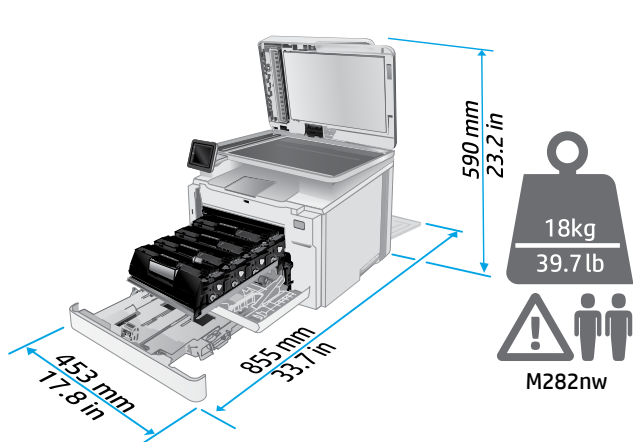
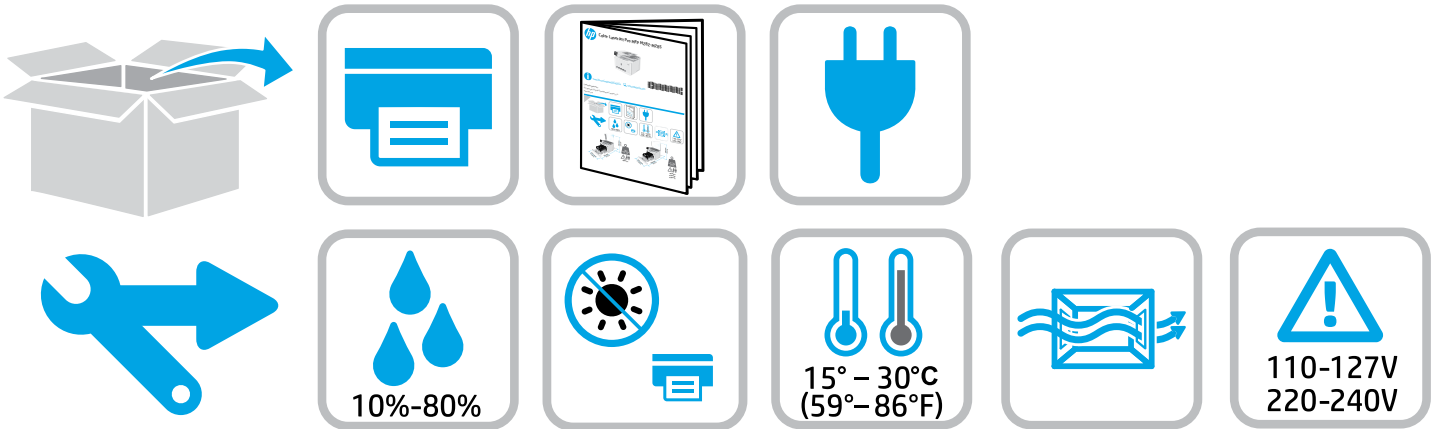
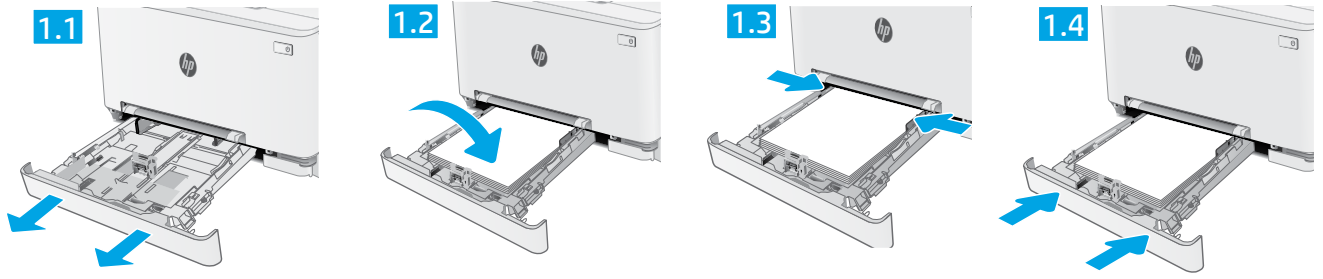




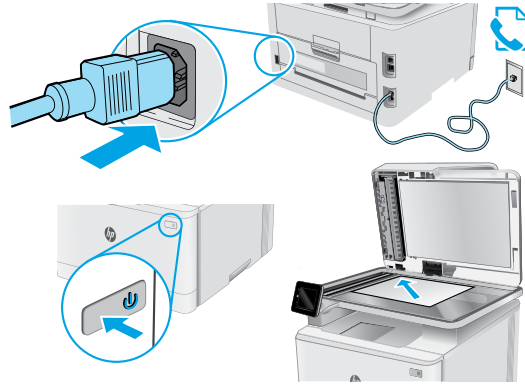
Color LaserJet Pro MFP M282-M285



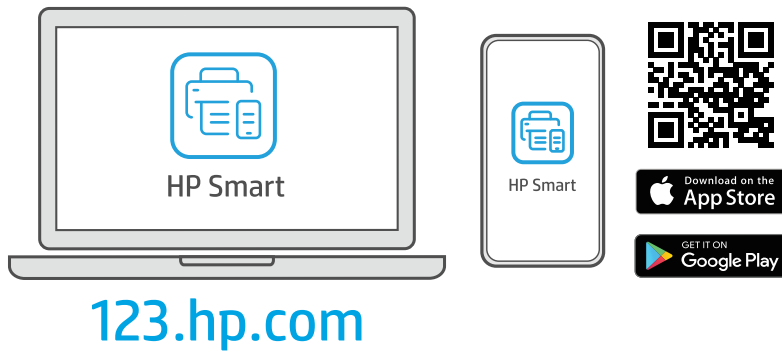
1



2



3



?

hp.com/support/printer-setup



Trouble getting started?

Find setup information and videos online.



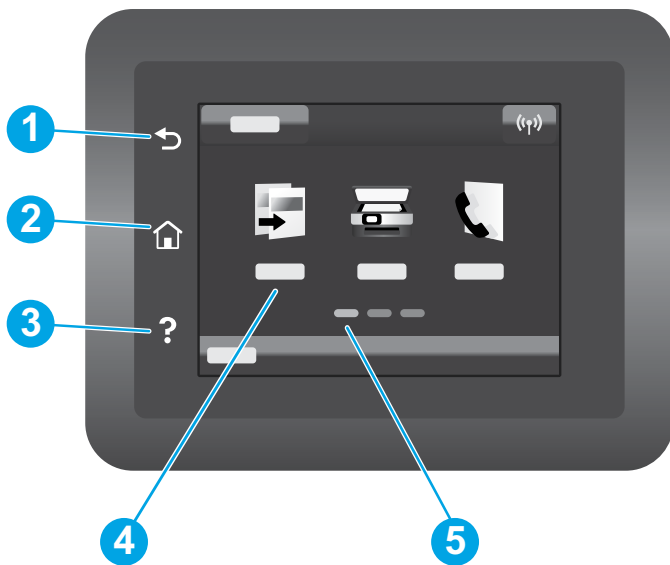
Color LaserJet Pro MFP M282-M285 Reference Guide

Need Help? - FAQ

For frequently asked questions, go to www.hp.com/support/ljM282MFPFAQ or scan the QR code.



Touchscreen control panel view



- | | |
|---|----------------------------|
| 1 | Back button |
| 2 | Home button |
| 3 | Help button |
| 4 | Color touchscreen |
| 5 | Home page screen indicator |

Wireless network connection (wireless models only)

Use touchscreen control panel to set up your wireless connection:

Note: Before setting up your wireless connection, disconnect any USB or network cables from your printer.

1. Touch the **Wireless** icon, touch **Network Wi-Fi off**, and then touch **Setting**.
2. Touch **Wireless Setup Wizard**, and then select your network name from the list of available wireless networks.

Download and install the software

NOTE: Do not connect the USB cable until you are prompted to do so.

Method 1: Download from 123.hp.com/laserjet

1. Go to 123.hp.com/laserjet (Windows) or 123.hp.com (OS X), and click **Download**.
2. Follow the onscreen instructions and then prompts to save the file to the computer.
3. Launch the software file from the folder where the file was saved.
4. Follow the onscreen instructions to install the software.
5. When prompted to select a connection type, select the appropriate option for the type of connection.

Method 2: Download from printer support website (Windows)

1. Go to www.hp.com/support/ljM282MFP.
2. Select **Software and Drivers**.
3. Download the software for your printer model and operating system.
4. Launch the software file from the folder where the file was saved.
5. Follow the onscreen instructions to install the software.
6. When prompted to select a connection type, select the appropriate option for the type of connection.

Mobile printing

Method 1: HP Smart

Use the HP Smart app to set up, print, and more.

1. Scan the QR code or go to 123.hp.com.
2. Install the HP Smart app.
3. Run the HP Smart app and follow the onscreen instructions to connect, set up, print, and more.




Method 2: Wi-Fi Direct (wireless models only)

Wi-Fi Direct allows Wi-Fi capable devices, such as smart phones, tablets, or computers, to make a wireless network connection directly to the printer without using a wireless router or access point. Connect to the printer's Wi-Fi Direct signal the same way Wi-Fi capable devices are connected to a new wireless network or hotspot.

Enable Wi-Fi Direct

To set up Wi-Fi Direct from the control panel, complete the following steps:

1. From the Home screen on the printer control panel, touch the Connection Information  button, and open the following menus:
 - **Wi-Fi Direct**
 - **Settings**
 - **On/Off**
2. Touch the **On** menu item. The printer saves the setting and then returns the control panel to the **Wi-Fi Direct Settings** menu.

Discover the printer

1. From the mobile device, turn on the Wi-Fi, and search for wireless networks.
2. Select the printer as shown on the printer control panel.
Example printer name: Direct-bb-HP M282 Laserjet

Learn more about mobile printing

For further information about these and other operating systems (Chrome/Google Cloud Print), go to www.hp.com/go/LaserJetMobilePrinting or scan the QR code.



Use the scan feature

Use the HP Scan software on your computer to start a scan job at the printer.

Windows

Click **Start**, select **Programs** or **All Programs**, select **HP**, and then select **HP Scan**.

OS X

Go to the **Applications** folder and open **HP Smart**.

Troubleshooting

📶 Wireless connection troubleshooting

Verify that the printer is within the range of the wireless network. For most networks, the printer must be within 30 m (100 ft) of the wireless access point (wireless router). A USB cable might be required for temporary connection between the printer and the computer. To ensure that the wireless setup information synchronizes correctly, do not connect the USB cable until prompted to do so.

Follow these steps to restore the network settings:

1. Remove the USB cable from the printer.
2. Go to the **Setup** menu on your printer, select **Network Setup**, and then select **Restore Defaults/Restore Network Settings**. The printer will restore network default automatically and restart.
3. Continue to install the software.

User guide and additional support resources

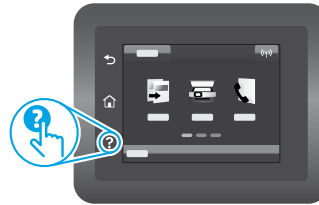
The user guide includes printer usage and troubleshooting information. It is available on the web: Go to www.hp.com/support/ljM282MFP.

Check for firmware updates

1. Go to www.hp.com/support/ljM282MFP.
2. Select a printer or category from the list, and then click **Drivers**.
3. Select the operating system, and click the **Next** button.
4. Select **Firmware**, and click the **Download** button.

Control panel help

Touch the Help ? button on the printer control panel to access help topics.



📶 Wireless printing

For more information about wireless printing and wireless setup, go to www.hp.com/go/wirelessprinting.



© Copyright 2020 HP Development Company, L.P.

Reproduction, adaptation or translation without prior written permission is prohibited, except as allowed under the copyright laws.

The information contained herein is subject to change without notice.

The only warranties for HP products and services are set forth in the express warranty statements accompanying such products and services. Nothing herein should be construed as constituting an additional warranty. HP shall not be liable for technical or editorial errors or omissions contained herein.

Trademark Credits

Windows® is a U.S. registered trademark of Microsoft Corporation.

Apple and the Apple logo are trademarks of Apple Inc., registered in the U.S. and other countries.

App Store is a service mark of Apple Inc. Android, Google Play, and the Google Play logo are trademarks of Google Inc.

OS X is a trademark of Apple Inc., registered in the U.S. and other countries.

AirPrint is a trademark of Apple Inc., registered in the U.S. and other countries.

