



## OKIPAGE 8z Product Update

### To Set Up your OKIPAGE 8z using Windows XP with USB or Parallel Connection:

Follow steps 1 through 6 in the Quick Setup guide. Then follow the instructions below.

Start with both the printer and the computer off.

Turn on the computer.

When Windows has started, turn on the printer.

When you see "Welcome to the Found New Printer Wizard," put the **Okí Windows XP Driver CD** in your CD drive.

**Note:** Windows XP may recognize a picture file on the disk and open a dialog listing things it can automatically do. If this happens, click **Cancel**.

If you see a "Hardware Installation" warning message, click **Continue Anyway**. The driver you are installing will not damage your system.

### Install Additional Software

With the **OKIPAGE 8z Software CD**—not the Oki Windows XP CD—in your CD-ROM drive:

Click **Start**→**Run**.

Type in **D:\install.exe**, where "D" is the letter of your CD-ROM drive. Click **OK**.

Click the language of your choice.

Click the button beside Additional Software. *The User's Guide, Status Monitor, Product Registration and Readme file will install.*

Follow the instructions on your screen to complete the installation and restart your computer.

### Activate the Status Monitor

Use the on-screen Status Monitor to monitor print jobs, check printer status, and set certain printer features.

From the Taskbar, click **Start**→**Programs**→**OKIPAGE 8z**→**OKIPAGE 8z Status Monitor**.

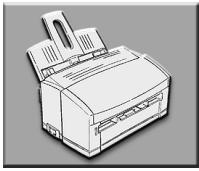
### To view the User's Guide

From the Taskbar, click **Start**→**Programs**→**OKIPAGE 8z**→**OKIPAGE 8z User's Guide**.

# 7

## Install Printer Software for Windows

### Windows 98 with USB Connection



These instructions assume "D" is your CD-ROM drive. Have your original Microsoft Windows 98 CD handy. You may be prompted for it during the installation.

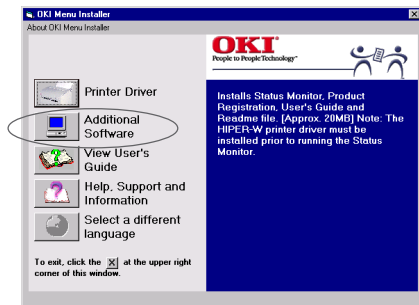
Check Windows Device Manager to verify that the USB port on your PC is enabled. If it is not, check your system's documentation for information.

- Turn on your computer, then turn on your printer.
- Found a USB Device appears. The wizard searches for a driver for the USB device. Click **Next**.
- Select "Search for the best driver for your device (Recommended)." Click **Next**.
- Insert the OKIPAGE 8z CD into your CD-ROM drive.
- Check "CD-ROM drive." Click **Next**.
- A search for the OKI USB device begins. Device is detected and OKI USB Driver displays. Click **Next** to continue.
- The Oki USB driver files are then copied to the system. Select **Finish**.
- The operating system detects the printer, the Add New Hardware Wizard appears. Click **Next**.
- Add New Hardware Wizard appears with OKIPAGE 8z listed. Click **Next**.
- Select "Search for the best driver for your device (recommended)." Click **Next**.
- Check "CD-ROM Drive." Click **Next**.
- Complete the installation following the instructions on your screen.

#### Install Additional Software

With the CD in your CD-ROM drive:

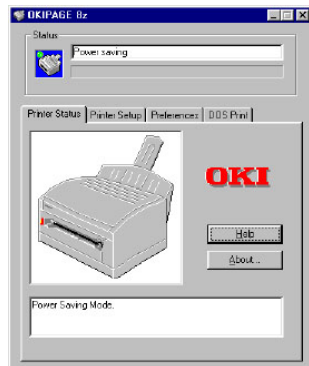
- Click **Start**→**Run**.
- Type in **D:\install.exe**. Click **OK**.
- Click the language of your choice.
- Click the button beside **Additional Software**. *The User's Guide, Status Monitor, Product Registration and Readme file will install.*
- Follow the instructions on your screen to complete the installation and restart your computer.



- Verify that the USB port is active:**  
From the Taskbar, click **Start**→**Settings**→**Printers**. Right-click the **OKIPAGE 8z icon**, then click **Properties**\Ports. Make sure **USB001** is checked, click **OK**.

#### Activate the Status Monitor

Use the on-screen Status Monitor to monitor print jobs, check printer status, and set certain printer features. From the Taskbar, click **Start**→**Programs**→**OKIPAGE 8z**→**OKIPAGE 8z Status Monitor**.



#### To view the User's Guide

From the Taskbar, click **Start**→**Programs**→**OKIPAGE 8z**→**OKIPAGE 8z User's Guide**.

### Windows 98 with Parallel Connection

! These instructions assume "D" is your CD-ROM drive.

Have your original Microsoft Windows 98 CD handy. You may be prompted for it during the installation.

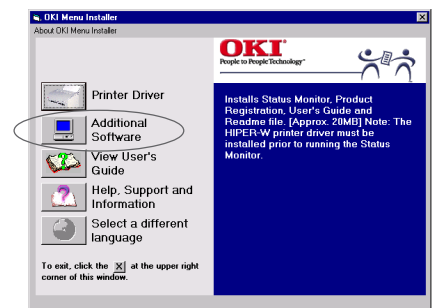


- Turn on your printer, then turn on your computer.
- When the Add New Hardware Wizard appears, click **Next**.
- Select "Search for the best driver for your device, (recommended)." Click **Next**.
- Insert the OKIPAGE 8z CD into your CD-ROM drive.
- Check "CD-ROM drive." Click **Next**.
- Confirm that the driver is ready to be installed. Click **Next**.
- Verify the printer name, and select **Next** to specify OKIPAGE 8z as the default printer. Click **Finish**.
- In the Print Test dialog box, select **Yes**, click **Finish**. The files are copied.

#### Install Additional Software

With the CD in your CD-ROM drive:

- Click **Start**→**Run**.
- Type in **D:\install.exe**. Click **OK**.
- Click the language of your choice.
- Click the button beside **Additional Software**. *The User's Guide, Status Monitor, Product Registration and Readme file will install.*
- Follow the instructions on your screen to complete the installation and restart your computer.



#### Activate the Status Monitor

Use the on-screen Status Monitor to monitor print jobs, check printer status, and set certain printer features.

From the Taskbar, click **Start**→**Programs**→**OKIPAGE8z**→**OKIPAGE 8z Status Monitor**.



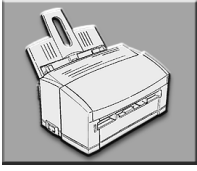
#### To view the User's Guide

From the Taskbar, click **Start**→**Programs**→**OKIPAGE 8z**→**OKIPAGE 8z Status Monitor**.

# 7

## Install Printer Software for Windows

### Windows 2000 with USB Connection



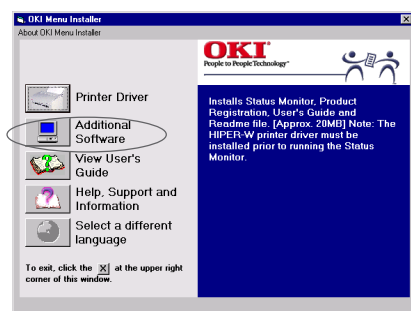
! These instructions assume "D" is your CD-ROM drive. Have your original Microsoft Windows 2000 CD handy. You may be prompted for it during the installation.

- Turn on your computer. Then turn on your printer. Found New Hardware "USB device" displays.
- The Found New Hardware wizard displays, click **Next**.
- Select "Search for a suitable driver for my device (recommended)." click **Next**.
- Insert the OKIPAGE 8z CD into your CD-ROM drive.
- "Where do you want to Search" displays, Check CD-ROM. Click **Next**.
- OKIPAGE 8z** driver is found. Click **Next**.
- In the Digital Signature Not Found box, click **Yes**. The printer driver is installed.
- Click **Finish** to complete the installation.

#### Install Additional Software

With the CD in your CD-ROM drive:

- Click **Start**→**Run**.
- Type in **D:\install.exe**. Click **OK**.
- Click the language of your choice.
- Click the button beside Additional Software. *The User's Guide, Status Monitor, Product Registration and Readme file will install.*
- Follow the instructions on your screen to complete the installation and restart your computer.



- Verify that the USB port is active:**  
From the Taskbar, click **Start**→**Settings**→**Printers**. Right-click the **OKIPAGE 8z** icon, then click **Properties**\Ports. Make sure **USB001** is checked, click **OK**.

#### Activate the Status Monitor

Use the on-screen Status Monitor to monitor print jobs, check printer status, and set certain printer features.

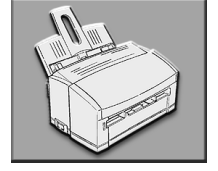
From the Taskbar, click **Start**→**Programs**→**OKIPAGE 8z**→**OKIPAGE 8z Status Monitor**.



#### To view the User's Guide

From the Taskbar, click **Start**→**Programs**→**OKIPAGE8z**→**OKIPAGE 8z User's Guide**

### Windows 2000 with Parallel Connection



! These instructions assume "D" is your CD-ROM drive.

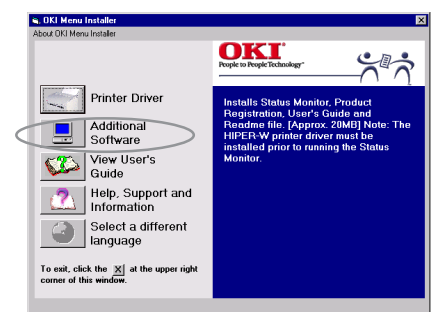
Have your original Microsoft Windows 2000 CD handy. You may be prompted for it during the installation.

- Turn on your computer and then turn on your printer.
- The Found New Hardware wizard displays, click **Next**.
- Select "Search for a suitable driver for my device (recommended)." Click **Next**.
- Insert the Okipage 8z CD into your CD-ROM drive.
- Check CD-ROM drive. Click **Next**.
- The wizard searches for the driver files. Click **Next**.
- In the Digital Signature Not Found box, click **Yes**. The printer driver is installed.
- Click **Finish**.

#### Install Additional Software

With the CD in your CD-ROM drive:

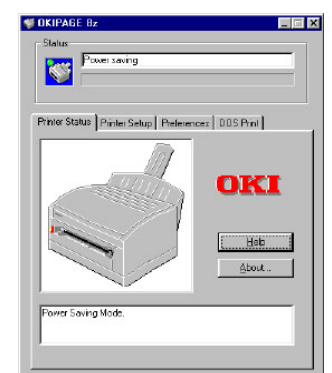
- Click **Start**→**Run**.
- Type in **D:\install.exe**. Click **OK**.
- Click the language of your choice.
- Click the button beside Additional Software. *The User's Guide, Status Monitor, Product Registration and Readme file will install.*
- Follow the instructions on your screen to complete the installation and restart your computer.



#### Activate the Status Monitor

Use the on-screen Status Monitor to monitor print jobs, check printer status, and set certain printer features.

From the Taskbar, click From the Taskbar, click **Start**→**Programs**→**OKIPAGE 8z**→**OKIPAGE 8z Status Monitor**.



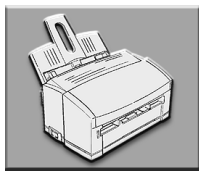
#### To view the User's Guide

From the Taskbar, click **Start**→**Programs**→**OKIPAGE8z**→**OKIPAGE 8z User's Guide**.

# 7

## Install Printer Software for Windows

### Windows 95 with Parallel Connection



! These instructions assume "D" is your CD-ROM drive.

Have your original Microsoft Windows 95 CD handy. You may be prompted for it during the installation.

Before you can install the printer software, you need to determine the version of Windows installed on your computer. To do this:

- Turn on your computer.
- Click **Start**→**Settings**→**Control Panel**. Double-click **System**.
- On the **General** tab, look under **System**. Beneath "Microsoft Windows 95" a version number appears, for example 4.00.950. If that number is followed by the letter "B" you have type 2, if not, you have type 1.

#### Windows 95 (type 1)

- Turn on your printer.
- Click "Driver from disk provided by hardware manufacturer." Click **OK**.
- Insert the OKIPAGE 8z CD into your CD-ROM drive.
- In the copy manufacturer's files field, click **Browse**, then locate **d:\oemsetup**. Click **OK**.
- In the Install From Disk dialog box, click **OK**.
- The Select Name for your printer dialog box appears. Click **Next**.
- In the Print Test Dialog box, select **Yes**. Click **Finish**.
- Continue with instructions below to **Install Additional Software**.

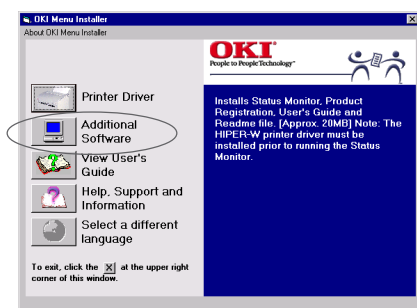
#### Windows 95 (type 2)

- Turn on your printer.
- Insert the OKIPAGE 8z CD into your CD-ROM drive.
- When the Update Device Driver Wizard appears, click **Finish**.
- The Select Name for Your Printer dialog box appears. Click **Next**.
- In the Please insert the disk labeled **Oki Driver Disk 1** message box, click **OK**.
- In the Copying Files dialog box, click **Browse**, then locate **D:\OP8WPGDI.DAT**. Click **OK**.
- In the Copying Files dialog box, click **OK**.
- In the Print Test dialog box, select **Yes**. the files are copied.
- Continue with instructions below to **Install Additional Software**.

#### Install Additional Software

With the CD in your CD-ROM drive:

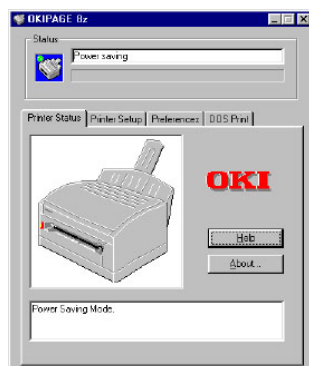
- Click **Start**→**Run**.
- Type in **D:\install.exe**. Click **OK**.
- Click the language of your choice.
- Click the button beside **Additional Software**. *The User's Guide, Status Monitor, Product Registration and Readme file will install.*
- Follow the instructions on your screen to complete the installation and restart your computer.



#### Activate the Status Monitor

Use the on-screen Status Monitor to monitor print jobs, check printer status, and set certain printer features.

From the Windows Taskbar, click From the Taskbar, click **Start**→**Programs**→**OKIPAGE 8z**→**OKIPAGE 8z Status Monitor**.



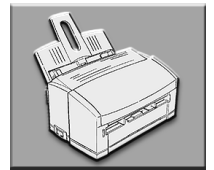
#### To view the User's Guide

Click **Start**→**Programs**→**OKIPAGE 8z**→**OKIPAGE 8z User's Guide**.

### Windows NT 4.0 with Parallel Connection

! These instructions assume "D" is your CD-ROM drive.

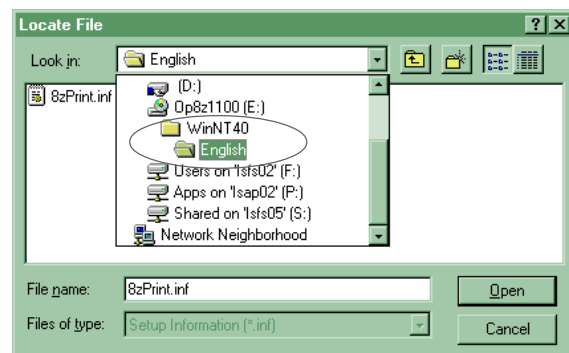
Have your original Microsoft Windows NT 4.0 CD handy. You may be prompted for it during the installation.



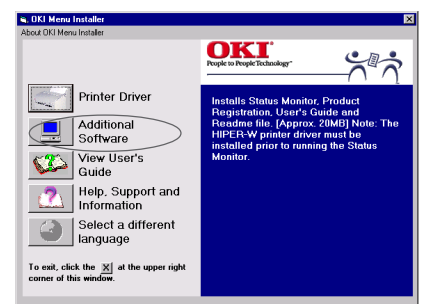
- Turn on your computer, then your printer.
- Insert the OKIPAGE 8z CD into your CD-ROM drive.
- From the Taskbar, click **Start**→**Run**.
- Type in **D:\install.exe**. Click **OK**.
- Click the language of your choice.
- The OKIPAGE 8z Menu Installer appears. Click the **Printer Driver** button.



- The Add Printer Wizard dialog box appears. Select "My Computer," click **Next**.
- From Available ports, select **LPT1:Local Port**. Click **Next**.
- The Manufacturer and Model box appears. Click **Have Disk**.
- The Install from Disk window pops up. Click **Browse**, then locate **D:\WinNT40\English**. Click **Open**. Click **OK**.



- OKIPAGE 8z** appears. Click **Next**.
- The Printer Name dialog box appears. Click **Next**.
- Select "Not shared" and click **Next**.
- In the Print Test dialog box, select **Yes**, click **Finish**. The files are copied.
- In the OKIPAGE 8z Menu Installer, click the button beside **Additional Software**. Follow the instructions on your screen. *The User's Guide, Status Monitor, Product Registration and Readme file install.*
- Follow the instructions on your screen to complete the installation and restart your computer.



#### Activate the Status Monitor

Use the on-screen Status Monitor to monitor print jobs, check printer status, and set certain printer features.

From the Windows Taskbar, click From the Taskbar, click **Start**→**Programs**→**OKIPAGE 8z**→**OKIPAGE 8z Status Monitor**.



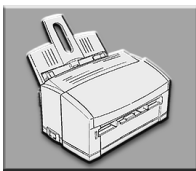
#### To view the User's Guide

Click **Start**→**Programs**→**OKIPAGE 8z**→**OKIPAGE 8z User's Guide**.

# 7 Install Printer Software

## for Macintosh with USB Port

! *The OKIPAGE 8z driver supports Mac OS 8.1 or higher.*



- Make sure the OKIPAGE 8z is OFF.
- Turn ON your computer.
- Insert the OKIPAGE 8z CD into your CD-ROM Drive.
- Double-click the **OKIPAGE 8z CD-ROM** icon that appears on the desktop.
- Double-click the Mac folder.
- Double-click the **Installer** icon.
- Click **Install** on the Printer Driver Installer screen. Installation begins.
- When "Installation is complete" appears, click **Quit**.
- Turn on the OKIPAGE 8z power.
- Activate the Chooser from the Apple menu.
- Click the **OKIPAGE 8z** icon. Close the window.
- Verify that you have changed the current printer. Click **OK**. Installation is complete.



### Install the On-line User's Guide

#### Requirements

- Microsoft Internet Explorer version 4.0 or higher
- Netscape Communicator version 4.7 or higher

! *In order to open the User's Guide, you must have your Macintosh set to run .htm extension files under your browser.*

- Create a folder in which to store the User's Guide.
- Place the OKIPAGE 8z CD in your CD-ROM drive.
- Copy the folder **Manual\Html\English** to the folder you created.

#### To View the User's Guide

To use the on-line User's Guide, go to the folder where you placed it and double-click the **start\_e.htm** file.

## For Support or Service

- See our multilingual web site:  
**<http://www.okidata.com>**
- Consult the store where you purchased your printer.
- *In the U.S. and Canada, call:*
  - 1-800-OKI-DATA (1-800-654-3282)  
24 hours a day, 7 days a week.
- *In Latin America, call:*
  - Oki Data de Mexico, S.A. de C.V., (525) 263-8780
  - Oki Data do Brasil, Ltda., 5511-5011-1518



## Product Registration

To register your printer use any of the following options:

- Go to our web site **<http://www.okidata.com>** and click Product Registration.
- Fill out the enclosed registration form and mail it or fax it in.
- *PCs only:* Register via modem using the Product Registration program (click Start→Programs→OKIPAGE 8z→Product Registration, then follow the on-screen prompts to register your printer).